

DEVILLAIRE

1948

the

1948
Leilaire

Published By
Students of Laura Conner High School
Augusta, Arkansas

DEDICATION



TO MRS. LAURA CONNER

First a teacher, then a material benefactor, and always a constant and inspiring friend of the youth of Augusta. We, the students of Laura Conner High School, dedicate this our Annual for

1947 - 1948

FOREWORD

This is it. This is the 1948 DEVILAIRE in which we, the staff, have tried to present to you a true picture of our school.

We wish to thank the Seniors of '48, our advertisers, the Student Council, Mrs. Charles Wilkens and her dramatic students, and the many other students, teachers, and friends who contributed to the publishing of this annual.

There have been struggles, indeed, but it has been fun to get together this annual which is, except for one sponsored by Mrs. Laura Conner several years ago, the first annual that "A.H.S." has had.

We believe that there will be much good in the continuity of this yearbook, for it binds together memories that will never be forgotten.

Perhaps as the years roll by, your thoughts may occasionally return to "A.H.S." and the things that happened while you were there. Then to reconstruct these scenes more clearly in your mind, you will probably bring out your old DEVILAIRE, dust off its cover, and turn the pages one by one.

May the 1948 DEVILAIRE present life at Laura Conner High as you really lived it . . . informal, untouched and real.

The Staff



Administration.

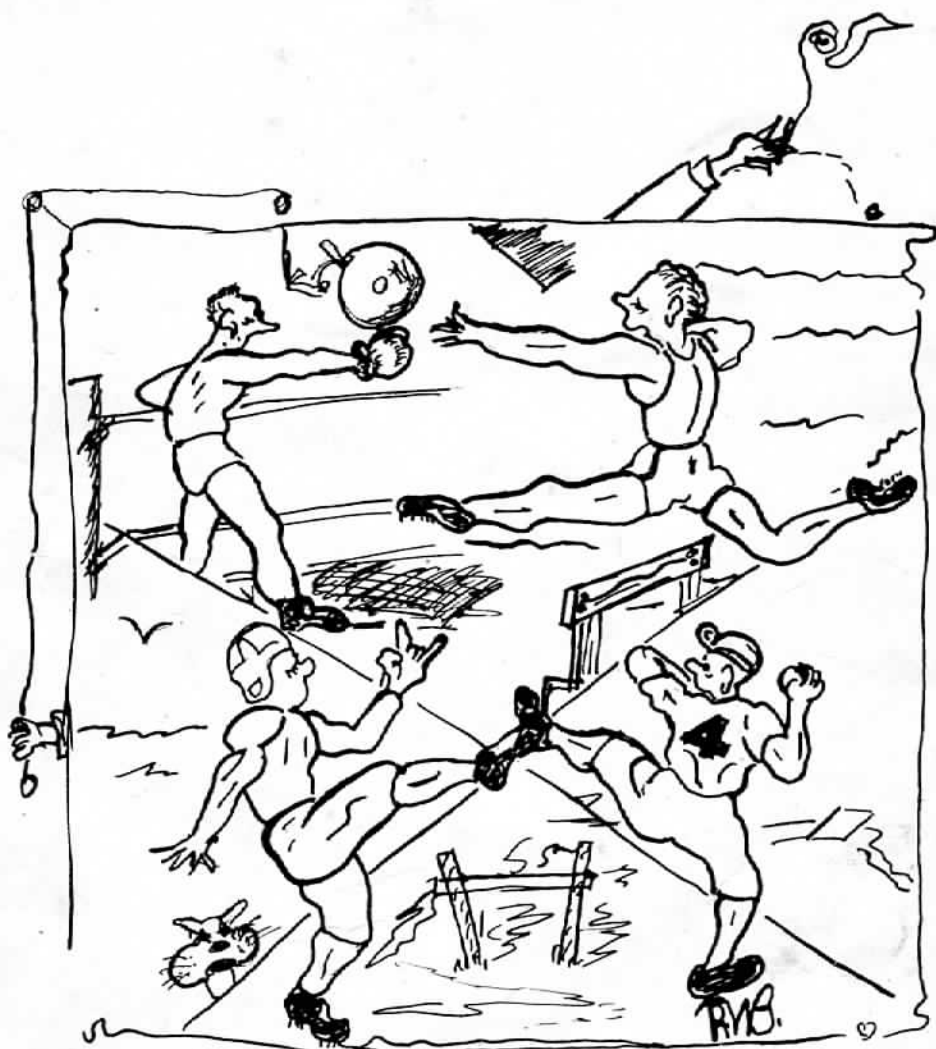


CONTENTS

CLASSES



ACTIVITIES



SPORTS



LAURA CONNER HIGH
AUGUSTA, ARKANSAS

B. E. WHITMORE
Superintendent

MRS. B. E. WHITMORE
Office Secretary



ADMINISTRATION

SCHOOL BOARD



VERNON MASSEY

BILL RIVES

JOHN REVEL

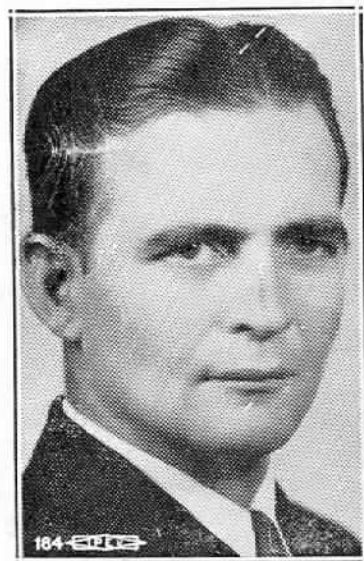
TOM STANLEY

FORD SMITH

E. B. CONNER (Picture unavailable)

President

Secretary to the Board



MISS THELMA ELLENBERG

Typing, Shorthand, Spanish

MACK HOPPER

*Vocational Guidance
Distributive Education*

MRS. LELAND HARRIS

Music

L. J. KEELING

Agriculture

CURTIS KING

Coach, Math

MISS DAPHENE LANGFORD

Home Economics

MRS. LINDSEY MCGHEE

Study Hall, English 7 & 8

MRS. W. E. PIGG

History, Math 7, Soc. Science

ARTHUR PORTER, JR.

Assistant Coach

MISS META DEAN SMITH

*Journalism, Physical Education,
English I & II*

MRS. CHARLES WILKINS

Speech, English III & IV

MRS. ELIZABETH WADELL

Chemistry, Biology, Science



FACULTY

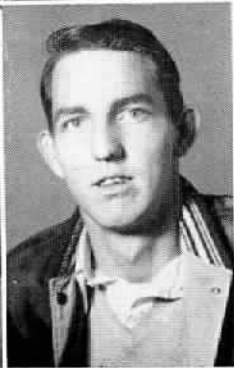
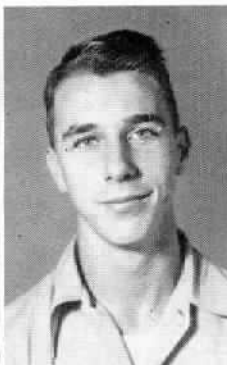
STUDENT COUNCIL



Row 1: Betty Kittrell, president; John Authur, vice-president; Helen Grayson, sec.-treas.; Raymond Boyles, senior representative.

Row 2: Jim McAlexander, junior representative; Craig Williams, sophomore representative; Benny Kittrell, freshman representative; Rex Collins, eighth grade representative, Freed Duncan, seventh grade representative.

CLASSES



MARY BEARD

Cheerleader '46, '47, '48; Basketball '46, '47, '48; Red Devil Staff '48; Devilaire Staff '48; Class President '45; F.H.A. '45, '46, '48; Glee Club '45, '46; Senior Play '48; Valedictorian '48; Who's Who in American High Schools '48.

TOM BEASLEY

Football '46, '47, '48; Glee Club '47, '48.

FORREST LEE BOTTOM

President F.F.A. '48; F.F.A. '46, '47, '48; Football '46; Red Devil '48; Senior Play Cast '48.

RAYMOND BOYLES

Class President '48; Junior Play Cast '47; Red Devil Staff '47; Devilaire Staff '48; F.F.A. '47.

MAX COLES

F.F.A. '47, '48; Junior Play Cast '47; Senior Play Cast '48.

DORIS BROOKS

F.H.A. '48; Red Devil Staff '48; Basketball '46; Junior Play Cast '47; Senior Play Cast '48; Glee Club '45, '46; Class Reporter '47.

VIRGINIA DANIELS

Vice-President '48; Junior Play Cast '47; Red Devil Staff '48; Halloween Queen '47; F.H.A. '45, '46, '47.

HELEN GRAYSON

Halloween Queen '48; Student Council Sec.-Treas. '48; Basketball Manager '47, '48; F.H.A. '45, '46, '48; Class Reporter '48; Red Devil Staff '48; Devilaire Staff '48; Basketball '45, '46; Glee Club '45, '46; Junior Play Cast '47; Senior Play Cast '48.

BOB FOGGO

Red Devil Staff '48; Football '48; Senior Play Cast '48; F.F.A. '48.

1948 SENIORS

NANCY GULLIC

Junior Play Cast '47; Red Devil Staff '48; Devilaire Staff '48; Glee Club '45, '46, '47; F.H.A. '45, '46, '47.

HOYLE LINSEY

F.F.A. '47; Red Devil '47; Glee Club '47.

MARGIE GRAYSON

Red Devil Staff '47; Devilaire '48; Basketball '46, '47; Junior Play '47; Senior Play '48; F.H.A. '45, '46, '48; Football Queen '48.

IMA JEAN LINSEY

F.H.A. '46, '47; Red Devil '47; Basketball '45.

ROBERT McALEXANDER

F.H.A. '48; Red Devil '47, '48.

W. R. HARRIS

Football '45, '46, '47, '48; Senior Play '48; Red Devil Staff '47, '48; Basketball '47, '48.

EVELYN PARSLEY

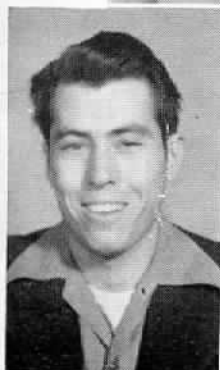
Class Sec. '47; Senior Play '48.

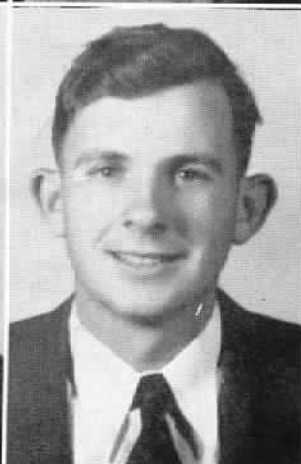
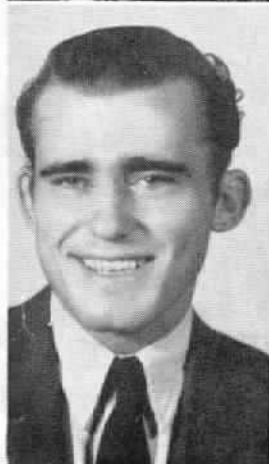
BETTY KITTRELL

Pres. Student Council '48; Red Devil Staff '47; Devil Gazette staff '46; Senior Play Cast '48; F.H.A. '46, '47; Class Sec. '45, '47; Class Vice-Pres. '46; Salutatorian '48; Who's Who in American High Schools '48.

JOHN POE

Senior Play '48; Junior Play '47; F.F.A. '48.





LOIS POE

Glee Club '45; Senior Play Cast '48; Devil Gazette '45.

CLARA SIMMONS

F.H.A. '46, '47, '48; Senior Play Cast '48; Devilaire Staff '48; Red Devil Staff '48; Glee Club '45, '46; Football Maid '47.

WANDA SULLIVAN

Junior Play Cast '47; Senior Play Cast '48; F.H.A. '45, '46, '47; F.T.A. Pres. '48; Glee Club '46.

RACHEL VINZANT

Junior Play Cast '47; Senior Play Cast '48; F.H.A. '45, '46, '47; Red Devil Staff '48; Devilaire Staff '48; Glee Club '45, '46, '47; Salutatorian '48; Who's Who in American High Schools.

DON JOHNSON

Cheerleader '48.

TOMMY KITTRELL

Class Sec.-Treas. '48; Football '45, '46, '47, '48.

TOMMY LEE MILLER

Football '45, '46, '47; Class Pres. '47; Junior Play Cast '47; Red Devil Staff '47; Devilaire Staff '48.

LAWRENCE CHESTER MOON

Football '48; Glee Club '48.

JUNIORS

JOHN AUTHUR

MARY L. AUTHUR

TOMMY BURROW

EDWIN CONNER

BETTY LOU COSSEY

BONNIE COVINGTON

FARREL EUBANKS

HELEN FRENCH

BOYCE HENSLEY

SHELLY HOLLER

MARY HUENEFELD

NETTIE KINSEY

